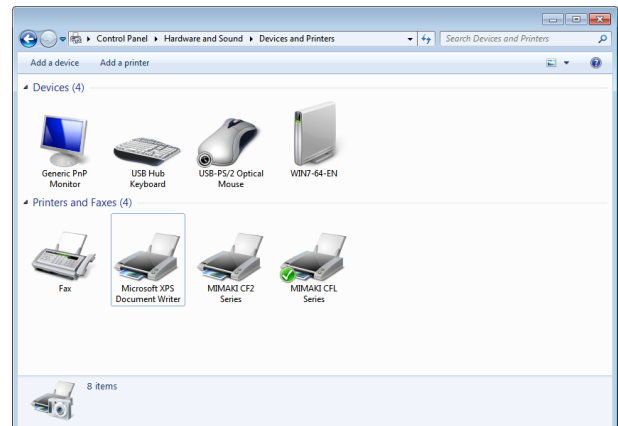


Thank you for purchasing Mimaki product.
This "Connection Guide" describes the connection of ArtiosCAD to CFX series.

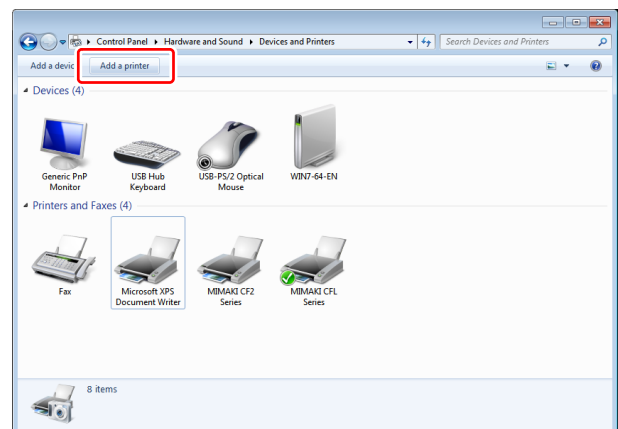
Adding a printer (generic/text only)

Register a printer (generic/text only) in order to output from the ArtiosCAD.

1. Open [Devices and Printers] from the Windows [Control Panel].

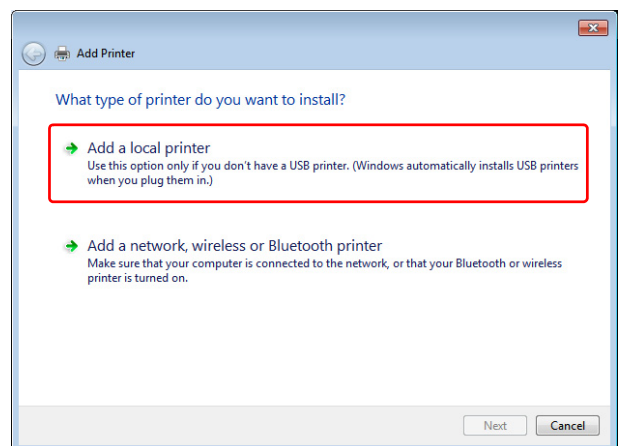


2. Click [Add a printer].



3. Select the type of printer to be installed.

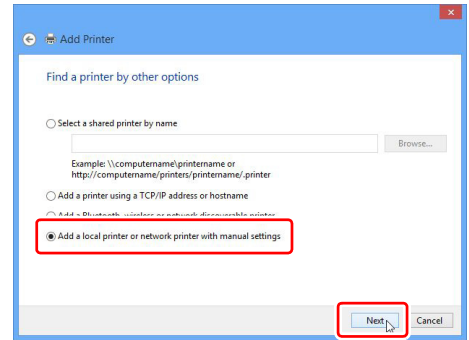
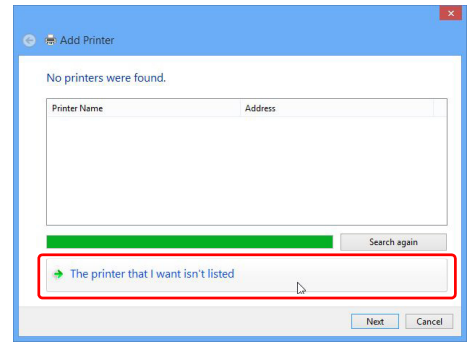
Select [Add a local printer].





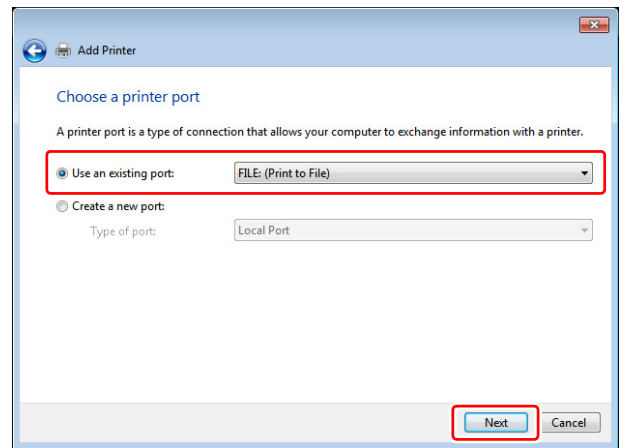
Perform the following procedures if using Windows 8.

- (1) Click "The printer that I want isn't listed"
- (2) Select "Add a local printer or network printer with manual settings".
- (3) Click the [Next] button.



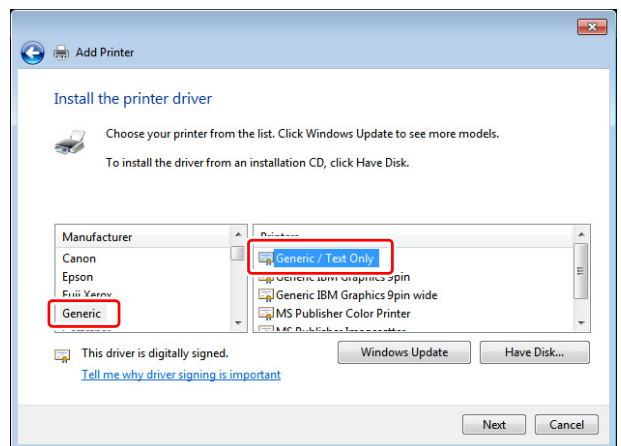
4. Select the printer port.

- (1) Check the radio button of "Use existing port".
- (2) Select [FILE (Output to file)] and click the [Next] button.



5. Install the printer driver.

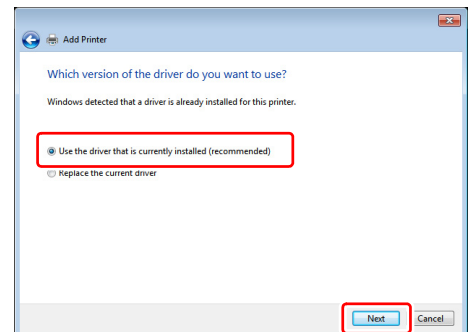
- (1) Select "Manufacturer: Generic" and "Printer: Generic/Text Only".
- (2) Click the [Next] button to display the screen shown on the right.



Important!

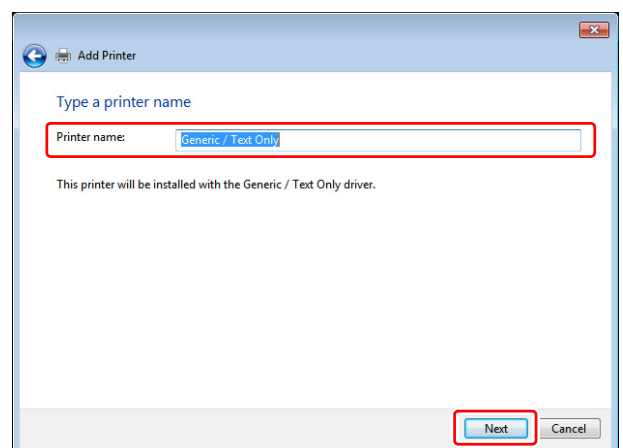
If "Generic/Text Only" is already installed

- Click the [Next] button to display the screen shown on the right. Select "Keep existing driver" and click the [Next] button.



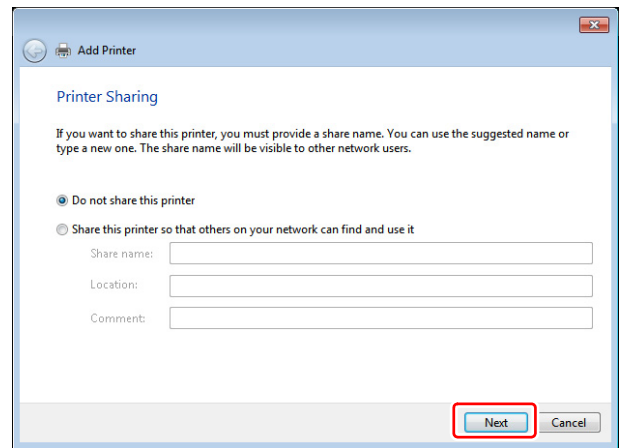
6. Input "Generic/Text Only" for the printer name and click the [Next] button.

Installation starts.



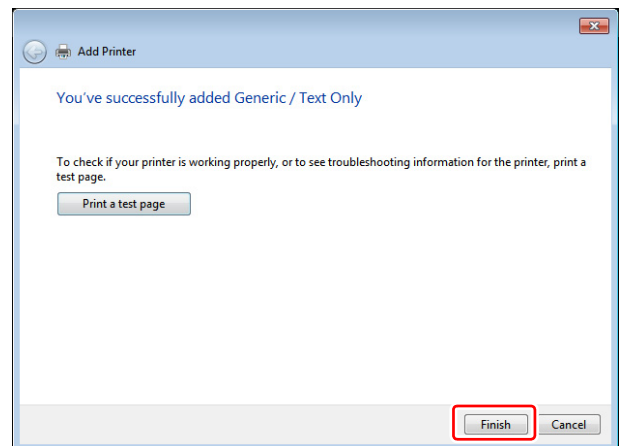
7. Select the sharing settings of the printer and click the [Next] button.

When installation is completed, the printer sharing selection screen appears. Use the radio button to select whether to share the installed printer with other network computers.



8. Click the [Finish] button.

This completes the procedures for adding a printer.



9. Specify the Generic/Text Only port.

Select a port that matches the output method.



If using a serial connection

- [Printer Properties] - [Port] for the COM port being used, and check that the communication conditions of the plotter and computer are the same.

If using LAN output

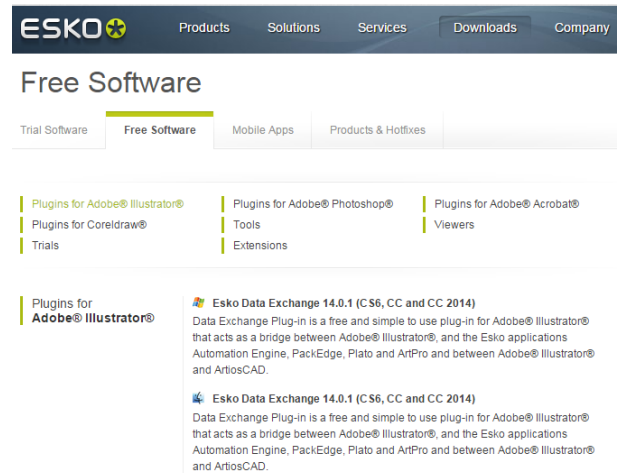
- Create a [Standard TCP/IP Port], set the IP address and port number, and select the [Standard TCP/IP Port] created by [Printer Properties] - [Port].

Import to Illustrator and cut by FineCut

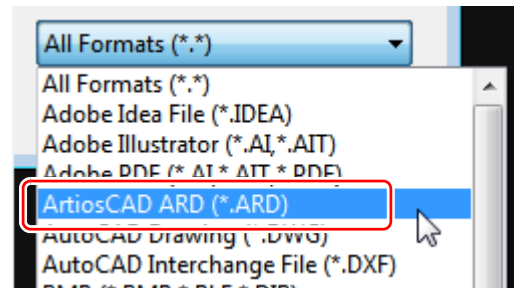
1. Download Esko Data Exchange (Illustrator plug in) from the following URL

<http://www.esko.com/en/downloads/software/free-software/>

Corresponding Illustrator version : CS6 or later



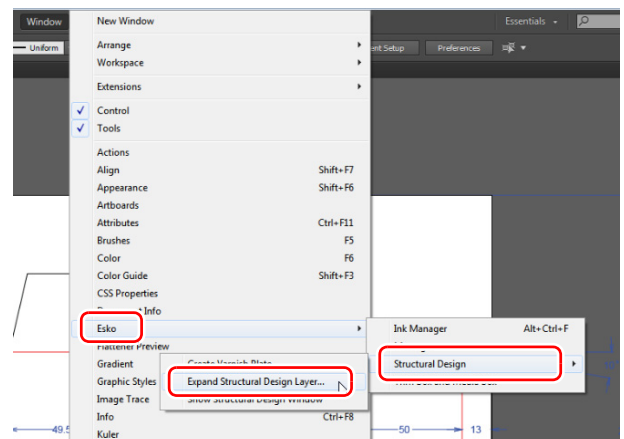
2. When you install the Esko Data Exchange, Artios CAD (*.ARD) will be added to the file format that can be read in Illustrator



3. Read the *.ARD file saved in ArtiosCAD Designer Solution in Illustrator.

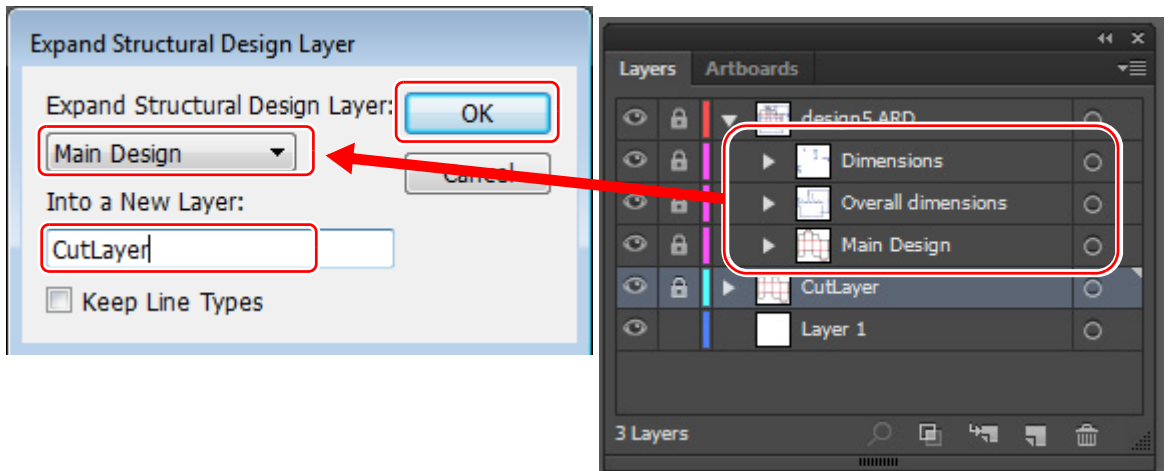
When performing a cut in FineCut using this data, make sure to perform the following steps.

Select [Window] menu - [Esko] - [Structural Design] - [Expand Structural Design Layer...].

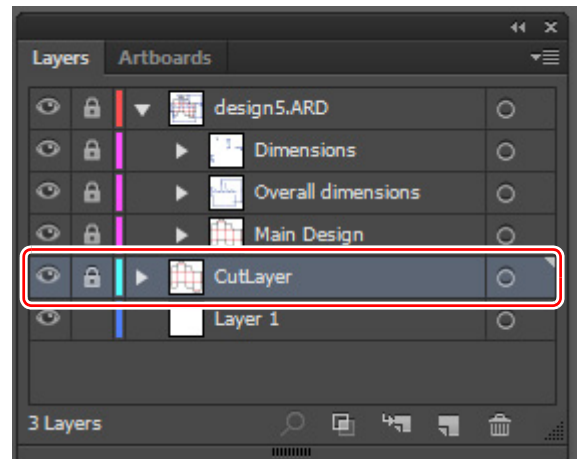


4. [Expand Structural Design Layer] dialog box appears

- (1) Expand Structural Design Layer: Select the layer that contains the pass you want to load in FineCut.
- (2) Into a New Layer: Enter the layer name you want to export.
- (3) Click [OK] button.



5. "CutLayer" which is specified in [in the new layer] in step 4 is newly created and the pass in the layer selected in [Expand Structural Design Layer:] will be copied in CutLayer.



6. The pass of "CutLayer" can be read into FineCut by hiding and unlocking all layers except the layer created by [Expand Structural Design Layer].

